

STANDARD DESIGN NOTES:

- THERE ARE A TOTAL OF 43 SINGLE RESIDENTIAL LOTS.
- ALL OF THE STAGE IS TO BE FED FROM AN EXISTING FDH LOCATED IN STAGE 1A.
- REFER TO SPA DRAWING NO. 2220-E01 FOR COORDINATION WITH THE ELECTRICAL DESIGN.

LEGEND

	FIBRE DISTRIBUTION HUB FDH CABINET		TRANSFORMER / KIOSK / PAD MOUNT SUB-STATION / POLE MOUNT TRANSFORMER
	NBNCo PIT TYPE 2 PLASTIC PIT OR SIMILAR		SHARED TRENCH
	NBNCo PIT TYPE 5 PLASTIC PIT OR SIMILAR		ZERO LOT PROPERTY BOUNDARY
	NBNCo PIT TYPE 8 PLASTIC PIT OR SIMILAR		END CAP CONDUIT WITH STATION NO.
	NBNCo PIT TYPE 9 PLASTIC PIT OR SIMILAR		CAP SERVICE CONDUIT (P50/P20) P20=P23 mm NBNCo SERVICE CONDUIT
	EXISTING NBNCo PIT		LOCAL CONDUIT (P100/P50)
	EXISTING CONDUIT		NBNCo STAGE BOUNDARY

CONDUIT CONFIGURATION

CONDUITS AND DUCTS ARE IN LAYER:
< L460 NBN Support - Underground >
AND TERMINOLOGY CATEGORISED INTO TWO GROUPS IN
THE DRAWINGS AS PER BELOW:
1-DUCT USED WITH LOCAL NETWORK
2-CONDUIT USED WITH LEAD-IN DROPS
ATTRIBUTES ATTACHED TO CONDUITS ARE AS SHOWN

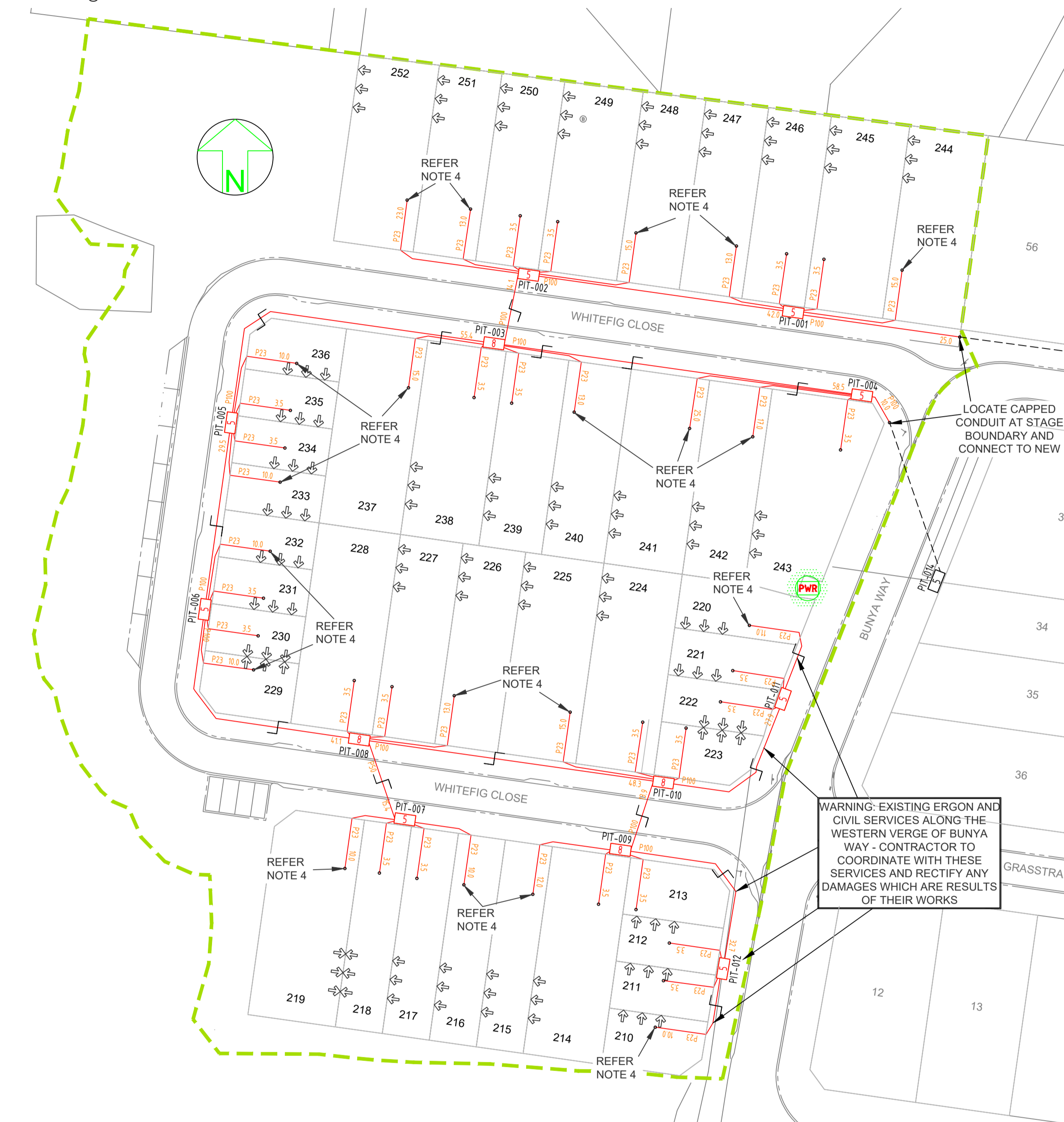


- NOTE:
- P100 HAS AN INTERNAL DIAMETER OF 104.9 mm AND A MINIMUM WALL THICKNESS OF 4.5 mm
 - P50 HAS AN INTERNAL DIAMETER OF 53 mm AND A MINIMUM WALL THICKNESS OF 3.1 mm
 - P20 HAS AN INTERNAL DIAMETER OF 23.3 mm AND A MINIMUM WALL THICKNESS OF 1.4 mm

STANDARD CONSTRUCTION NOTES:

- REFER TO NBN Co DOCUMENT NO. NBN-TE-CTO-194 (DEPLOYMENT OF THE NBN Co CONDUIT AND PIT NETWORK - GUIDELINES FOR DEVELOPERS) FOR DETAILED CONSTRUCTION SPECIFICATION.
- MULTIPLE 15° CONDUIT BENDS TO BE USED TO SWING IN AND OUT OF THE STANDARD TRENCH ALIGNMENT AND ENTER THE NARROW ENDS OF THE PIT.
- PITS TO INCLUDE LID GASKET TO PREVENT DIRT ENTRY AND SPREADER BARS TO PREVENT PIT BUCKLING DURING BACKFILL / GROUND COMPACTION. PIT LIDS TO BE EMBOSSED WITH "NBN" AND COMPLY AS PER CLAUSE 5.3.2 OF THE ABOVE NBN Co DOCUMENT.
- SERVICE CONDUITS TO EXTEND 1m INSIDE THE FRONT PROPERTY BOUNDARY. CONTRACTORS TO TIE TELECOMMUNICATIONS CAUTION TAPE TO END OF SERVICE CONDUITS AND EXTEND TO ABOVE GROUND LEVEL FOR FUTURE CONDUIT LOCATION.
- ALL CONDUITS TO ENTER AND EXIT AT NARROW ENDS OF PITS ONLY. LOCATE CONDUITS AS CENTRALLY IN PIT END WALLS AS POSSIBLE. CONDUITS SHALL NOT BE INSTALLED WITHIN 50 mm OF ANY CORNER OF THE PIT. MINIMUM SEPARATION BETWEEN CONDUITS TO BE 25 mm. INSTALL CONDUITS AND CONDUIT COLLARS (BUSHES) TO BE SQUARE AND FLUSH WITH THE PIT END WALL. REFER TO THE PIT END WALL DETAILS IN THIS DESIGN FOR ADDITIONAL REQUIREMENTS.
- MINIMUM COVER TO BE: 300 mm FOR SERVICE DROP CONDUITS, 450 mm IN VERGE, 600 mm UNDER LOCAL ROADS, AND 800 mm UNDER MAIN ROADS.
- CONDUITS ARE TO BE CLEANED AND PROVEN USING A MANDREL. AFTER TESTING INSTALL A SUITABLE DRAW ROPE TO ALL CONDUITS AND CAP CONDUIT ENDS. SEAL CONDUITS AT PITS TO PREVENT ENTRY OF DUST AND MOISTURE. SERVICE CONDUIT DRAW ROPES TO BE ADDITIONALLY FITTED WITH A PLASTIC LABEL AT PIT END, IDENTIFYING LOT NUMBER AND DISTANCE / DIRECTION FROM BOUNDARY.
- INSTALL NON CONDUCTIVE (METAL FREE) MARKER TAPE ABOVE ALL NBN Co CONDUITS, 300 mm BELOW FINISHED GROUND LEVEL. INSTALL METALLIC KERB MARKERS AT ROAD CROSSINGS.
- REFER TO ERGON ENERGY STANDARD DRAWINGS 5228 AND 5168 SHEETS 1 TO 3 FOR SHARED TRENCH CROSS SECTIONS.
- GRADE TOP OF PIT TO MATCH VERGE / FOOTPATH.
- WHERE REQUIRED, SUPPLY AND INSTALL SERVICE AND ROAD CROSSING CONDUITS SHOWN IN THE SITE PLAN.
- WHERE CONDUIT BURIAL DEPTH IS LESS THAN THAT SPECIFIED IN THE NBN Co DEPLOYMENT OF CONDUIT AND PIT NETWORK GUIDELINES, SUPPLY AND INSTALL CONCRETE COVER (FOR VERGE AND FOOTPATH) / CONCRETE ENCASEMENT (FOR ROADWAYS) ENSURE THAT MINIMUM SEPARATION TO ALL OTHER SERVICES ARE MAINTAINED.
- WHERE SPECIFIED ON THE SITE PLAN, NBN Co CONDUIT TO BE INSTALLED UNDERNEATH STORM WATER. REFER TO THE NBN Co DEPLOYMENT OF CONDUIT AND PIT NETWORK GUIDELINES FOR THE MINIMUM CLEARANCES REQUIRED.
- SUPPLY AND INSTALL ADDITIONAL DEVIATING CONDUIT BENDS TO ACHIEVE THE INCREASED / DECREASED BURIAL DEPTH REQUIRED TO AVOID CLASH WITH OTHER SERVICES.
- CONTRACTOR TO ENSURE MRC POLICY 63 AND 15.05 ARE ADHERED FOR THE MINIMUM SEPARATION BETWEEN CIVIL ASSETS AND NBNCo INFRASTRUCTURE.

LAYOUT PLAN
SCALE: 1:500 @A1



WARNING-EXISTING ERGON AND CIVIL SERVICES ALONG THE WESTERN VERGE OF BUNYA WAY - CONTRACTOR TO COORDINATE WITH THESE SERVICES AND RECTIFY ANY DAMAGES WHICH ARE RESULTS OF THEIR WORKS

AS CONSTRUCTED

SAFETY FIRST
SAFETY STARTS WITH YOU

STAFF WORKING ON THIS ESTIMATE PLEASE NOTE:
The location of other authorities services which may affect this work have not been obtained by the estimator. Contractor to obtain service information before commencing.

****ATTENTION****
CONSTRUCTORS DO NOT
change or alter job
specifications unless first
checking with designer.

REV	DATE	DRAFTER	DESCRIPTION	APPROVED
B	20/02/17	HK	AS CONSTRUCTED	
A	27/06/14	LD	FOR CONSTRUCTION	
1	03/06/14	LD	FOR APPROVAL	

NBNCo APPROVAL RECORD:

<input type="checkbox"/> DD	SIGNATURE	DATE
<input type="checkbox"/> WD	_____	_____
<input type="checkbox"/> AB	_____	_____

QUALITY RECORD:

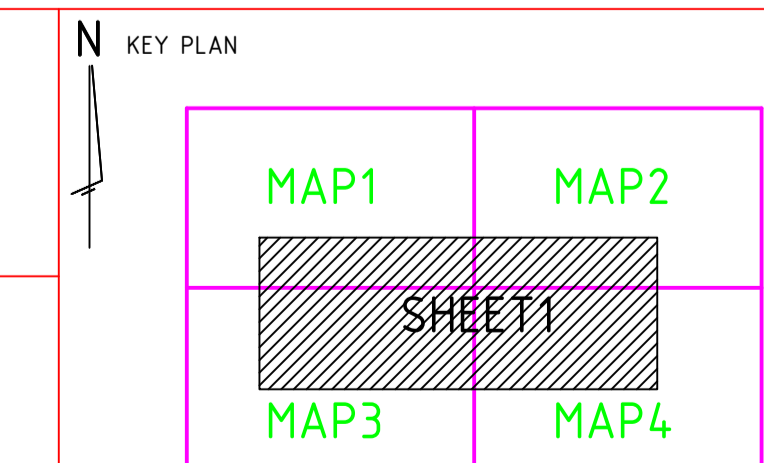
NBNCo DISCLAIMER

THIS DOCUMENT HAS BEEN PREPARED SOLELY FOR THE USE OF NBNCo LIMITED (ABN 86 136 533 741) FOR USE IN MAINTAINING NBNCo FACILITIES. IT HAS NOT BEEN CREATED FOR ANY OTHER USE. NO WARRANTY IS GIVEN THAT THE INFORMATION IS ACCURATE OR COMPLETE.

NBNCo
Limited

spa
consulting engineers

Simon Perkins & Associates
 Cairns : (07) 4032 3311
 Townsville : (07) 4728 3026
 PO Box 664 North Cairns QLD 4870
 Email Address : admin@spaconslting.com.au
 SPA Consulting Engineers (2012) Pty Ltd - s.c.a. 01888888



DRAWING TITLE:
WOODLANDS ESTATE STAGE 8
NBNCo PIT AND PIPE DESIGN
LAYOUT PLAN

STATE: QLD REGION: MK

FSA: FSAM: FDA:

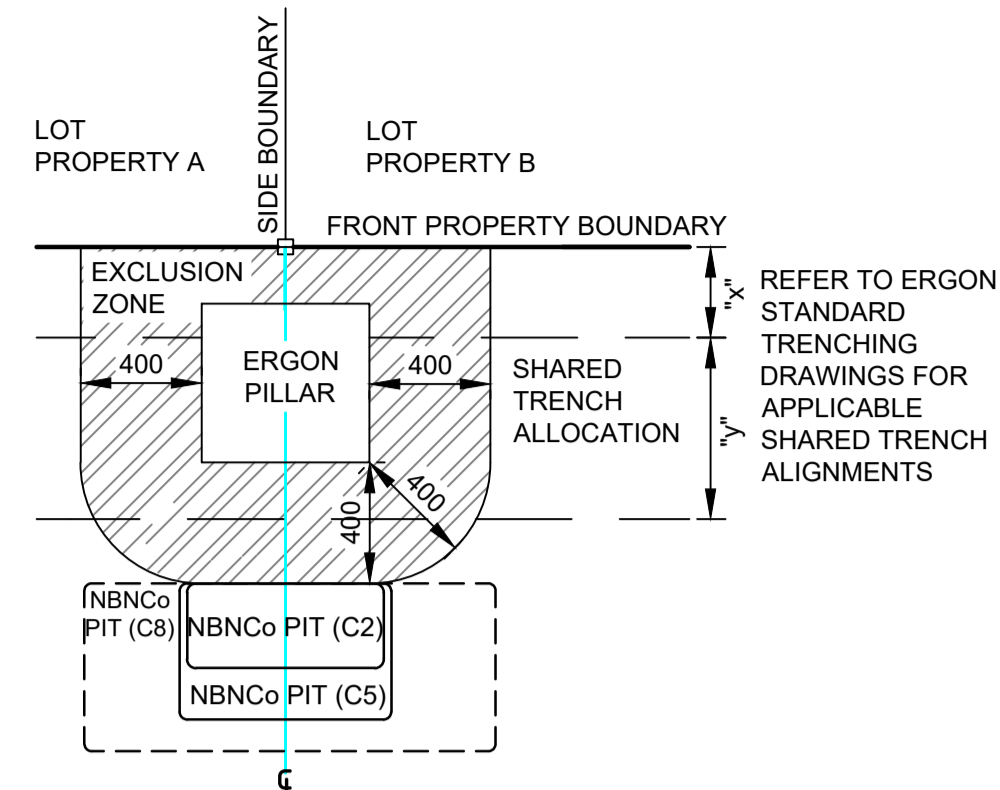
PROJECT No: AYCA-PYBH9

CADREF No: 2220-T01

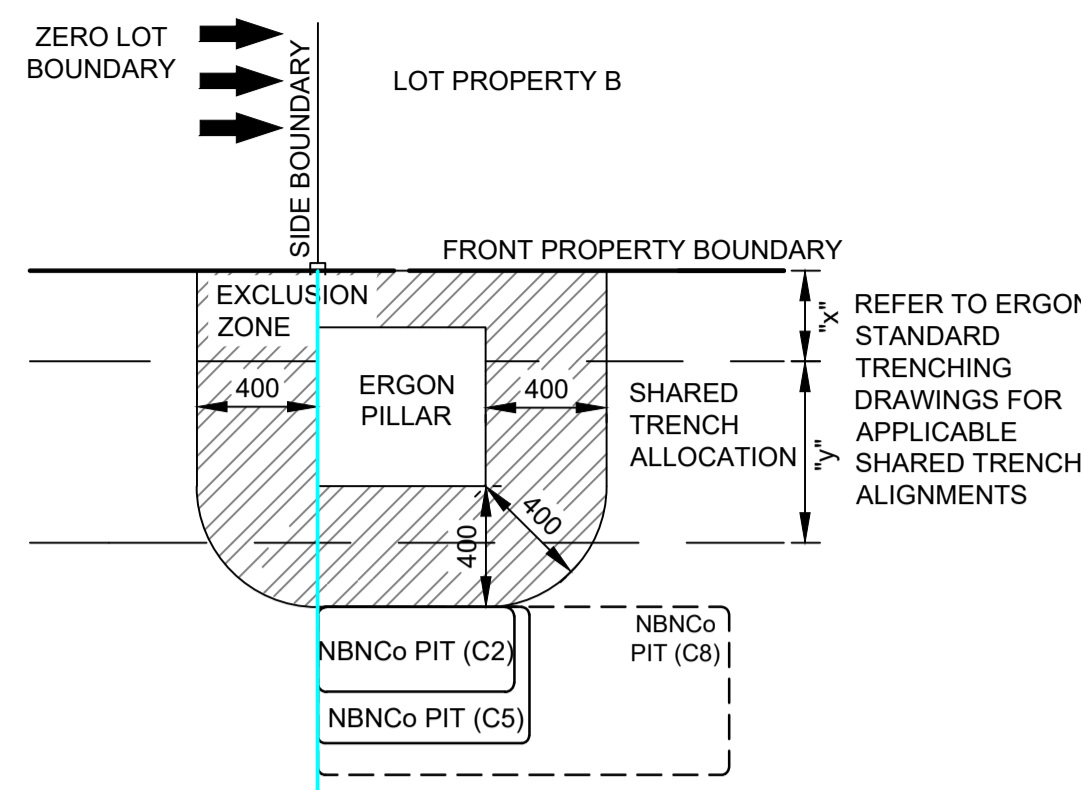
SCALE: AS SHOWN SHEET No. 1 OF 2 REV. B

TYPICAL PIT DETAILS

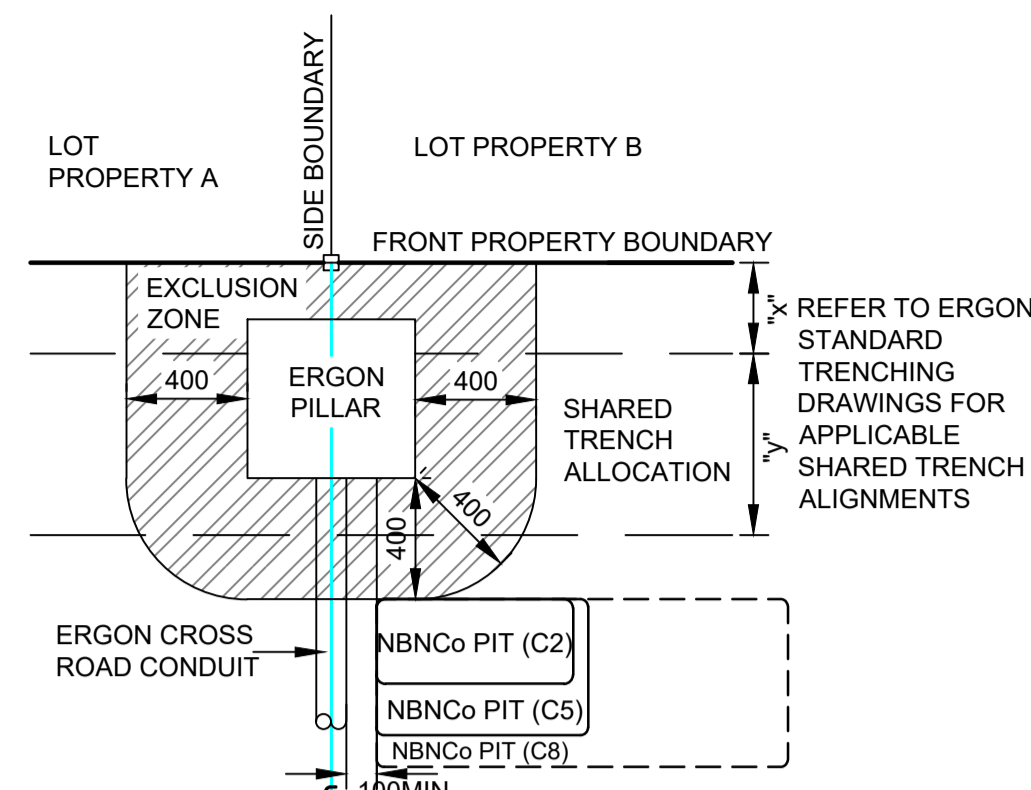
- NOTES:
- THESE DETAILS REPRESENT TYPICAL PIT CONFIGURATIONS AND THE CONTRACTOR SHALL DETERMINE THE MOST SUITABLE DETAIL FOR EACH PARTICULAR APPLICATION, IGNORING REDUNDANT DETAILS.
 - PITS SHALL BE INSTALLED CLEAR OF DRIVEWAYS AND FUTURE DRIVEWAY LOCATIONS. COORDINATE FINAL LOCATIONS WITH CIVIL DRAWINGS.
 - ENSURE PITS ARE INSTALLED IN ACCORDANCE WITH NBNC_o GUIDELINES AND THE FOLLOWING CLEARANCES:
 - A. 100 mm FROM ELECTRICAL CONDUIT
 - B. 150 mm FROM WATER RETICULATION
 - C. 150 mm FROM SEWER RETICULATION
 - D. 150 mm FROM STORMWATER RETICULATION
 - MIRROR CONFIGURATION WHERE APPROPRIATE



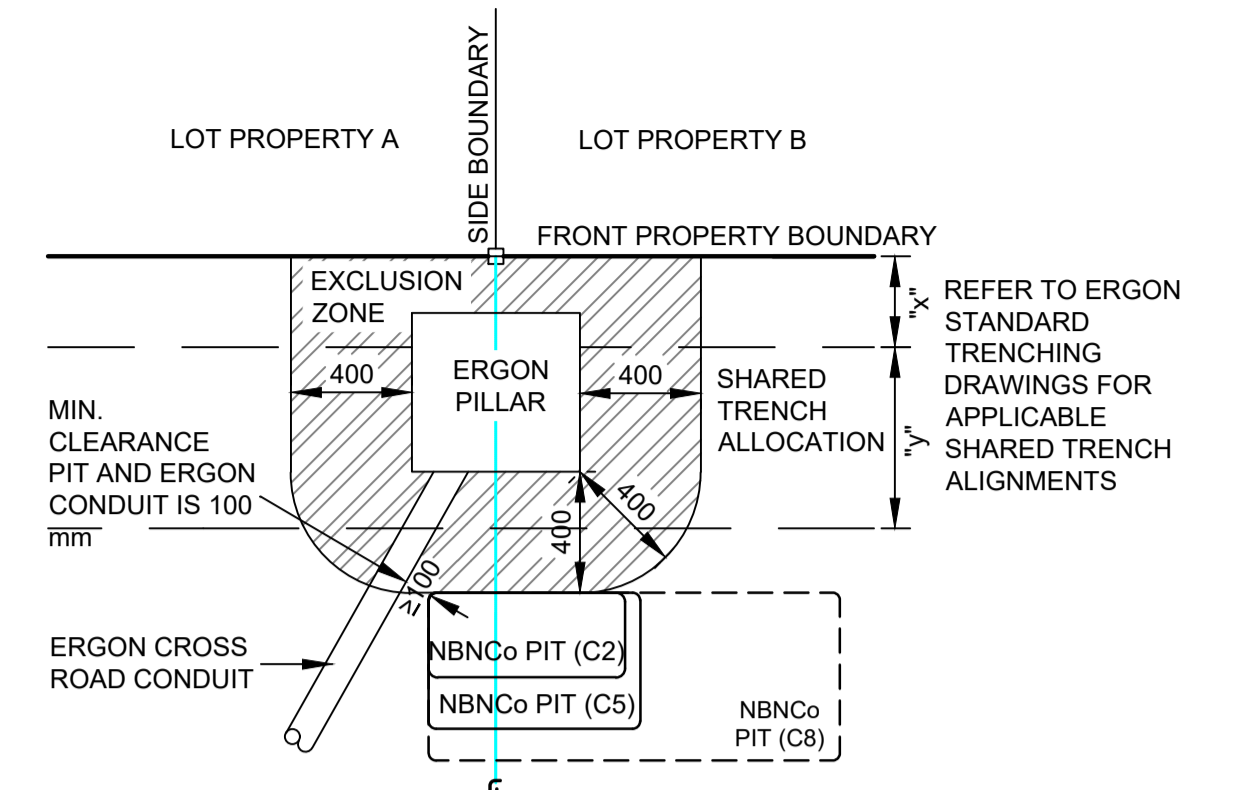
TYPICAL PIT DETAIL 1
PIT CENTRAL TO THE BOUNDARY WITH AN ERGON PILLAR



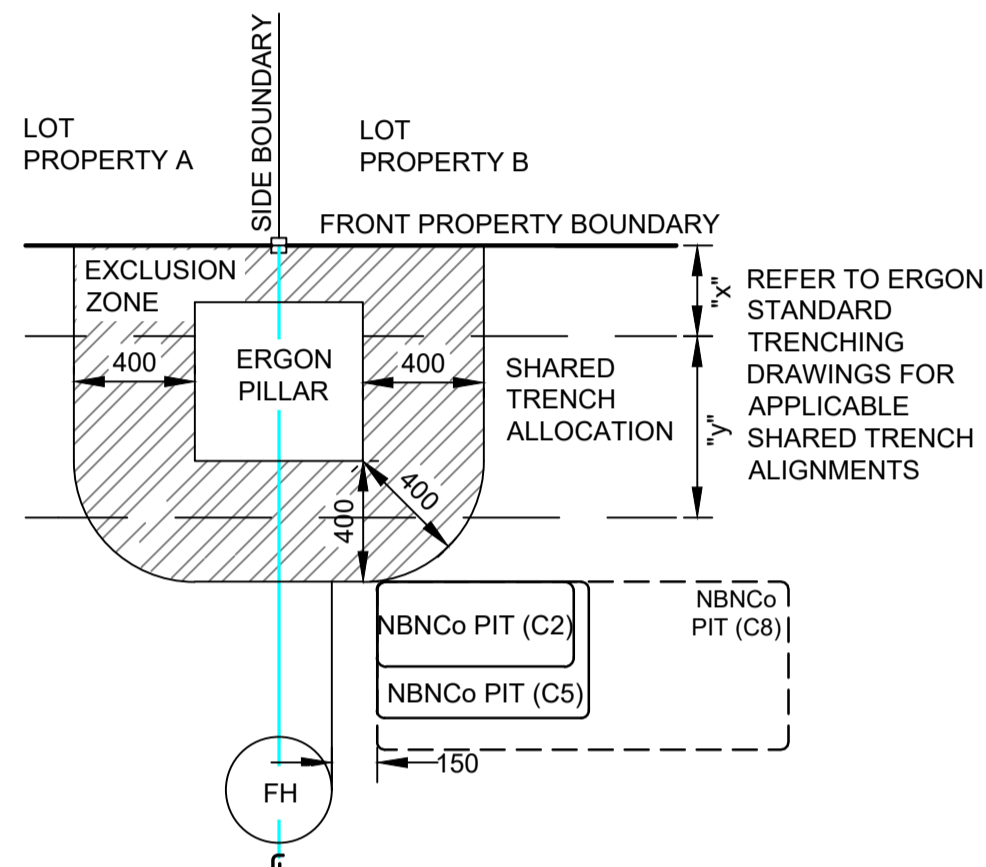
TYPICAL PIT DETAIL 2
PIT OFFSET FROM BOUNDARY WITH AN ERGON PILLAR (ZERO LOT BOUNDARY)



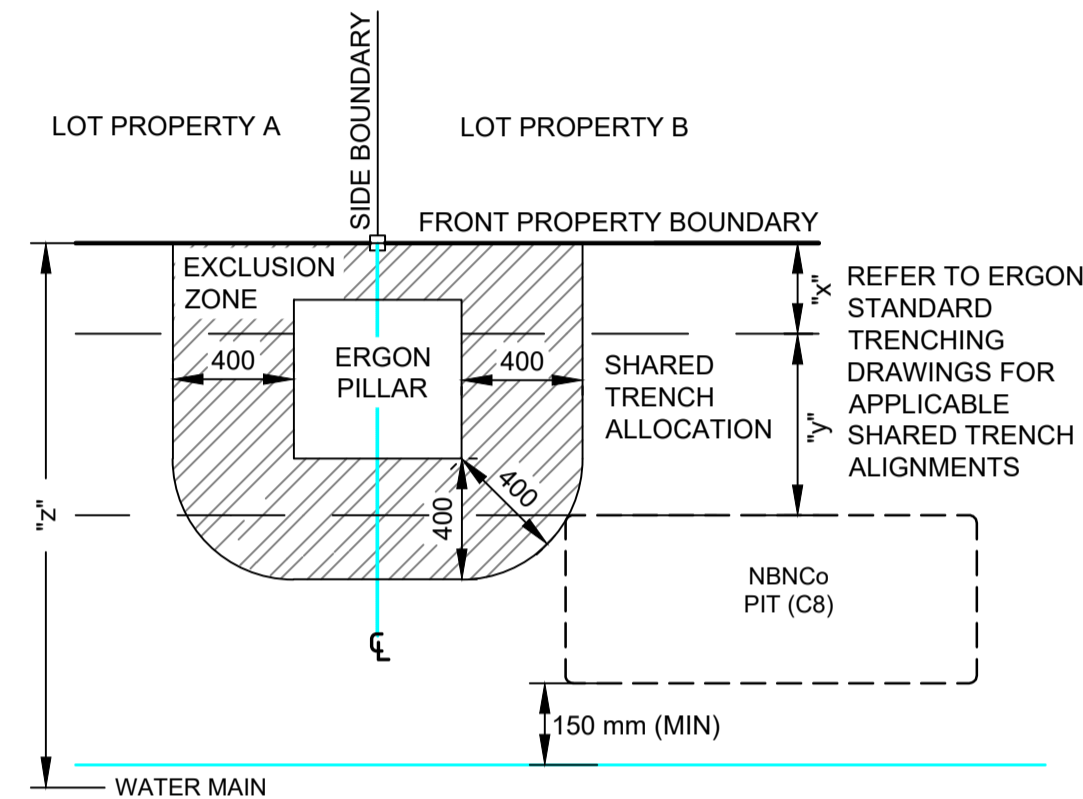
TYPICAL PIT DETAIL 3
PIT OFFSET FROM BOUNDARY WITH AN ERGON PILLAR AND 90° ERGON CONDUIT



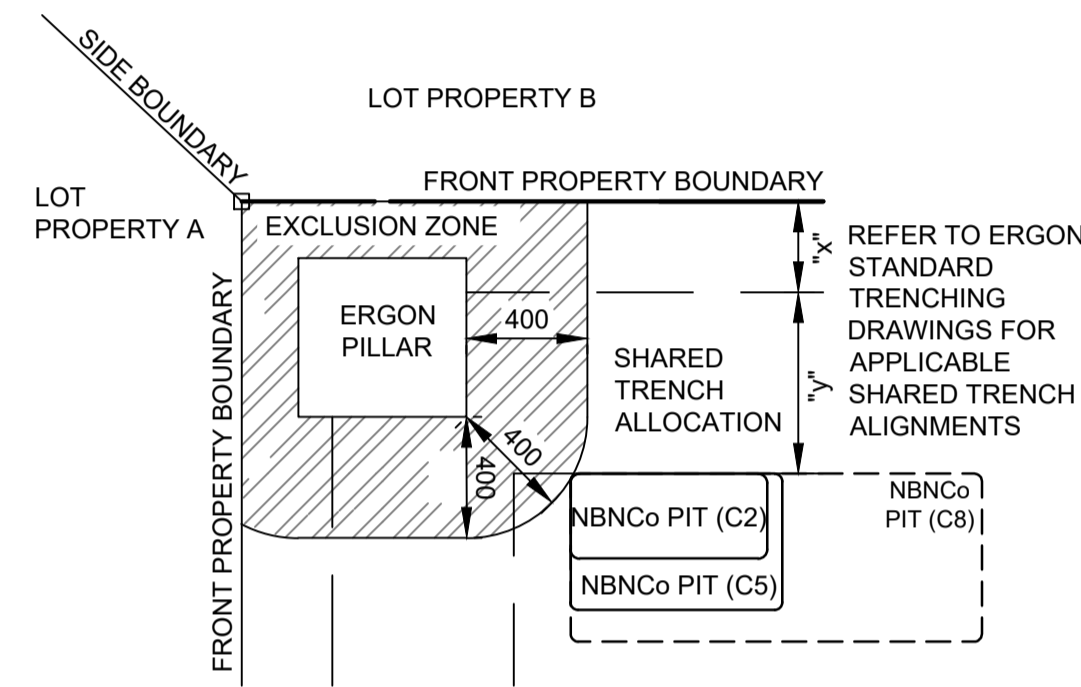
TYPICAL PIT DETAIL 4
PIT OFFSET FROM BOUNDARY WITH AN ERGON PILLAR AND ANGLED ERGON CONDUIT



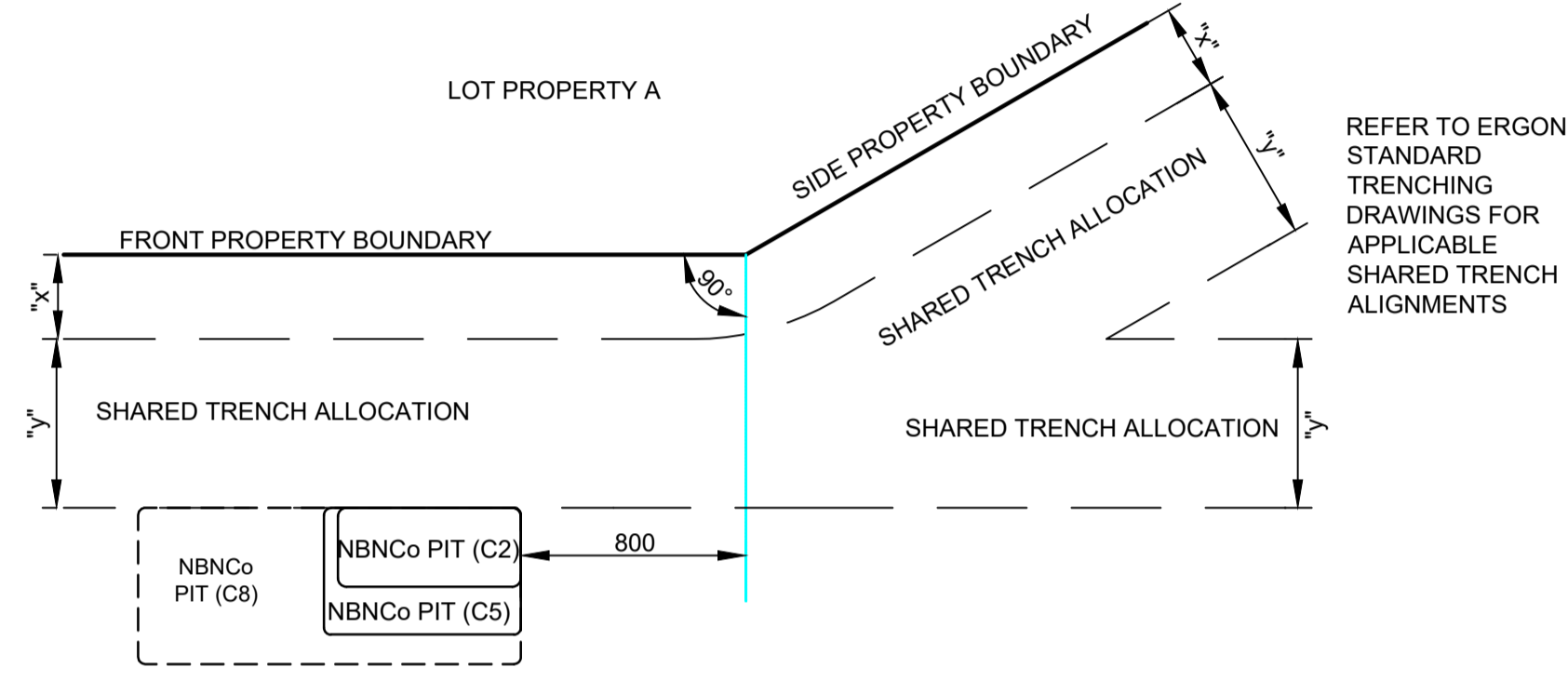
TYPICAL PIT DETAIL 5
PIT OFFSET FROM BOUNDARY WITH AN ERGON PILLAR AND FIRE HYDRANT



TYPICAL PIT DETAIL 6
C8 PIT OFFSET FROM BOUNDARY WITH AN ERGON PILLAR AND CLASHING WITH WATER MAIN

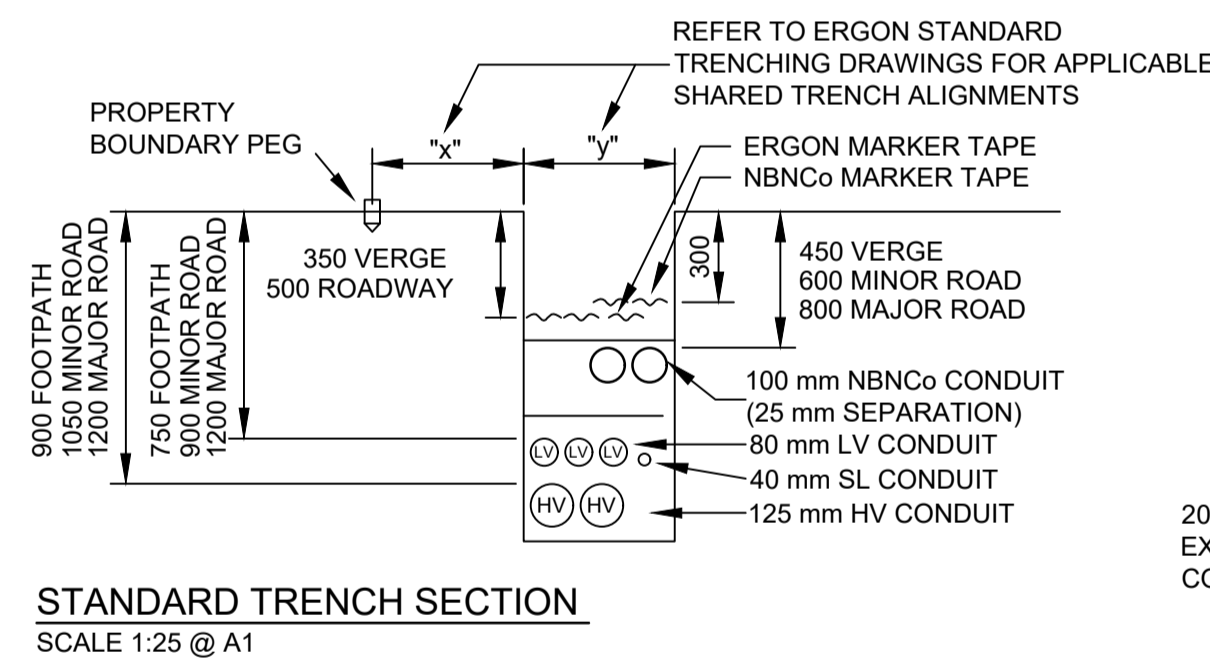


TYPICAL PIT DETAIL 7
PIT OFFSET FROM BOUNDARY WITH AN ERGON PILLAR ON CORNER LOT



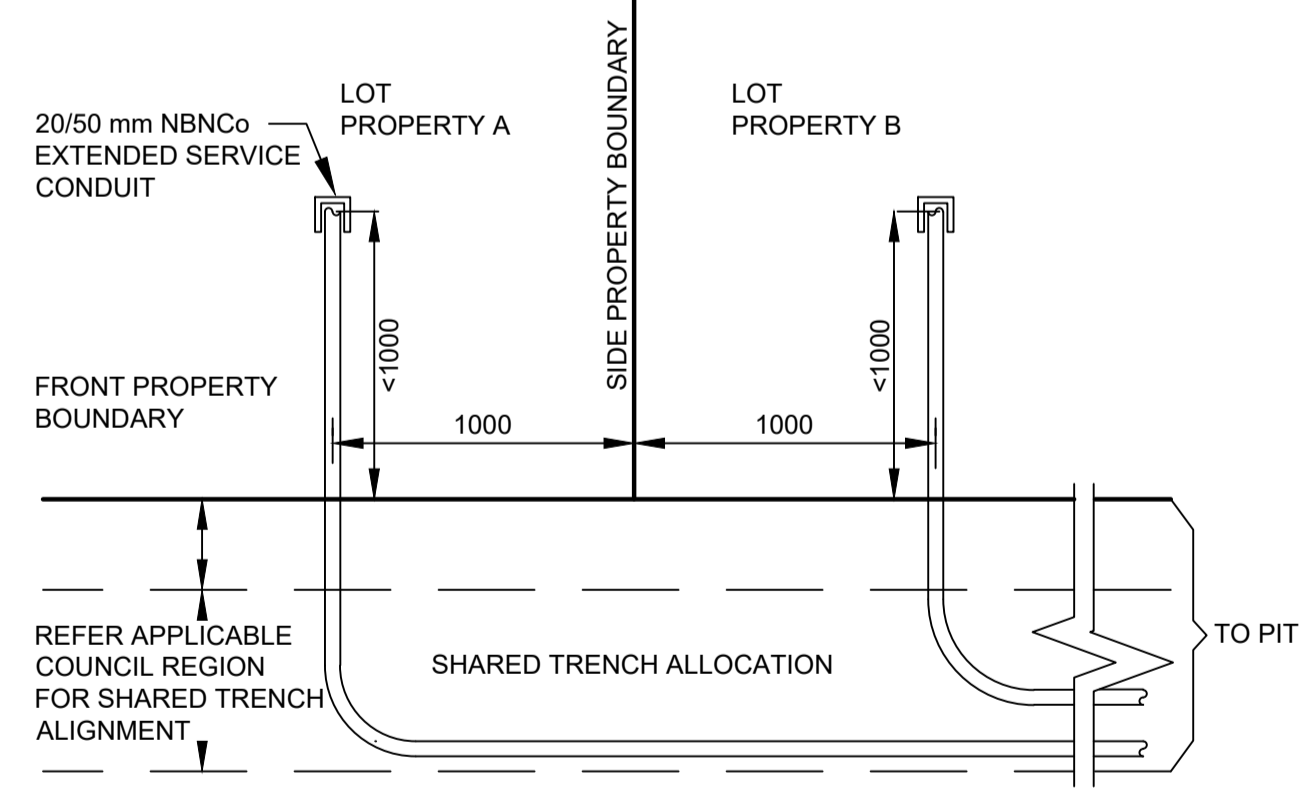
TYPICAL PIT DETAIL 8
PIT OFFSET FROM PROPERTY TRUNCATION POINT

SEPARATION FROM ERGON CONDUITS		
ERGON CONDUIT TYPE	PARALLEL SEPARATION (mm)	CROSSING SEPARATION (mm)
LV/SL	100	100
HV	300	100

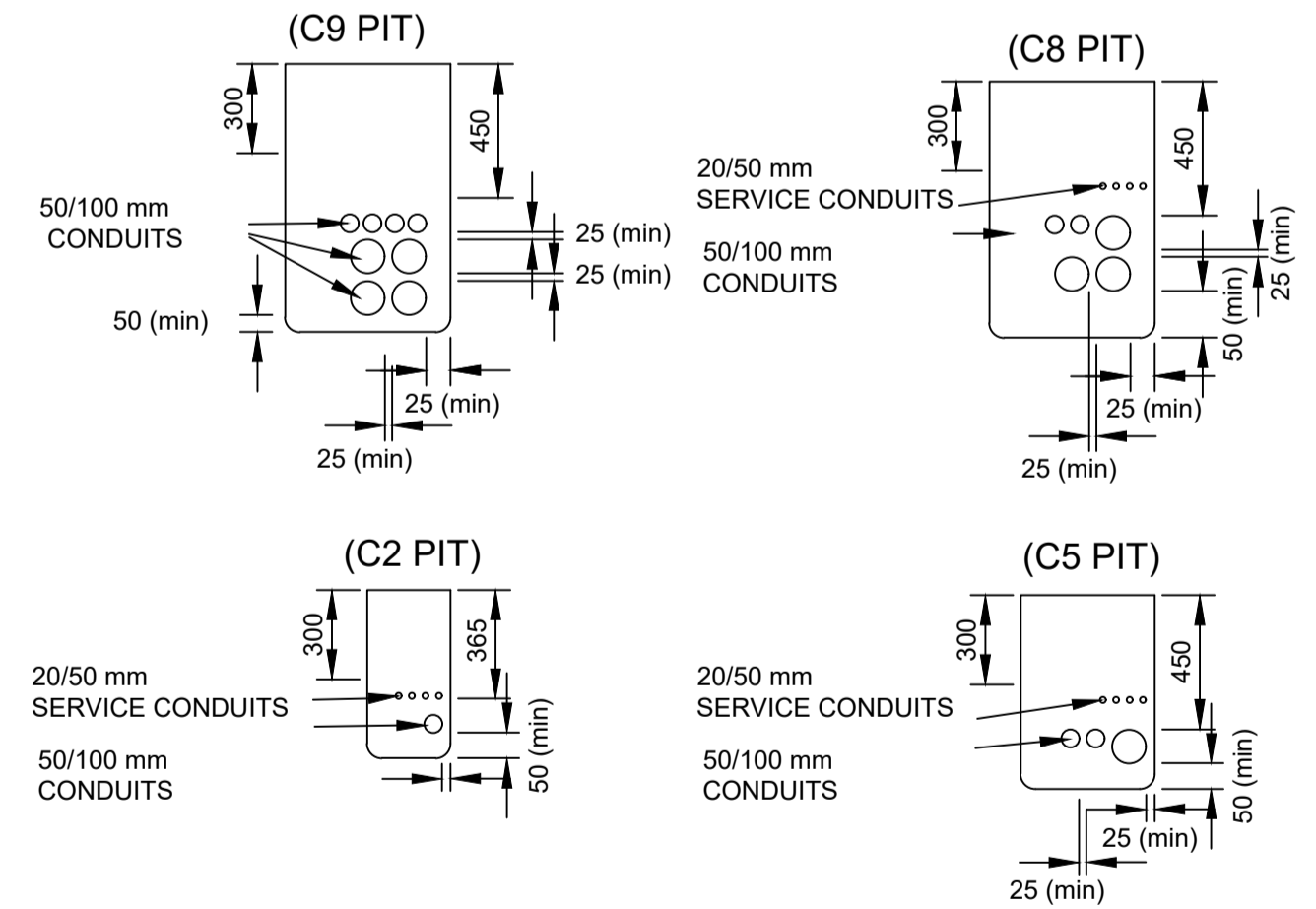


STANDARD TRENCH SECTION
SCALE 1:25 @ A1

NBNC Co PIT SIZES							
PIT TYPE	NAME	NOMINAL EXTERNAL DIMENSIONS (mm)			MINIMUM INTERNAL DIMENSIONS (mm)		
		LENGTH	WIDTH	DEPTH	LENGTH	WIDTH	DEPTH
SERVICE DROP ACCESS PIT / BOUNDARY PIT (MAXIMUM 50 mm CONDUIT ENTRY)	TYPE 2	650	280	565	490	150	500
BOUNDARY PIT / LOCAL NETWORK PIT	TYPE 5	700	450	650	510	290	540
LOCAL NETWORK CONNECTION PIT / DISTRIBUTION PIT	TYPE 8	1360	555	860	1130	390	820
FDH PIT	TYPE 9	2000	555	900	1820	370	840



EXTENDED SERVICE CONDUITS TO DISTANT PIT



TYPICAL PIT END WALL DETAILS
SCALE 1:25 @ A1

AS CONSTRUCTED

****ATTENTION****
CONSTRUCTORS DO NOT change or alter job specifications unless first checking with designer.

REV	DATE	DRAFTER	DESCRIPTION	APPROVED
B	20/02/17	HK	AS CONSTRUCTED	
A	27/06/14	LD	FOR CONSTRUCTION	
1	03/06/14	LD	FOR APPROVAL	

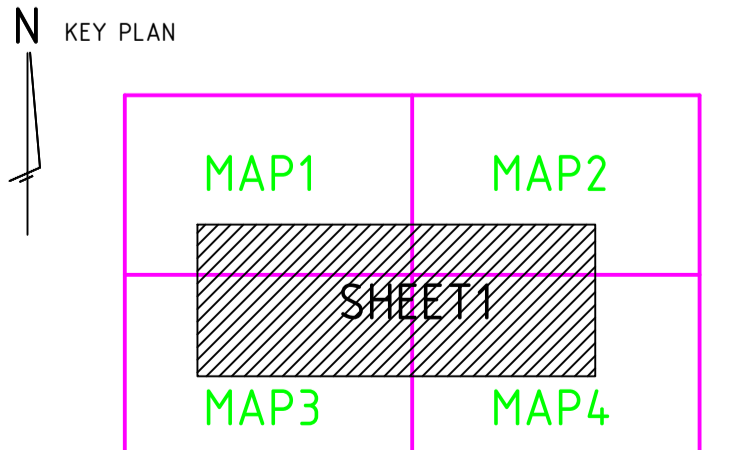
NBNC APPROVAL RECORD:

DD	WD	AB	SIGNATURE	DATE
<input type="checkbox"/>	<input type="checkbox"/>	<input type="checkbox"/>		

QUALITY RECORD:

NBNC DISCLAIMER

THIS DOCUMENT HAS BEEN PREPARED SOLELY FOR THE USE OF NBNC LIMITED (ABN 86 136 533 741) FOR USE IN MAINTAINING NBNC FACILITIES. IT HAS NOT BEEN CREATED FOR ANY OTHER USE. IT SHOULD NOT BE SCALED TO LOCATE NBNC ASSETS. NO WARRANTY IS GIVEN THAT THE INFORMATION IS ACCURATE OR COMPLETE.



DRAWING TITLE: WOODLANDS ESTATE STAGE 8 NBNC_o PIT AND PIPE DESIGN DETAILS

STATE: QLD REGION: MK

FSA: FSAM: FDA:

PROJECT No: AYCA-PYBH9

CADREF No: 2220-T02

SCALE: AS SHOWN SHEET No: 2 OF 2 REV: B