

# THE GREAT OUTDOORS

Smart Living - Smart Space™





An Economic Development Queensland initiative



Image for illustrative purposes only.



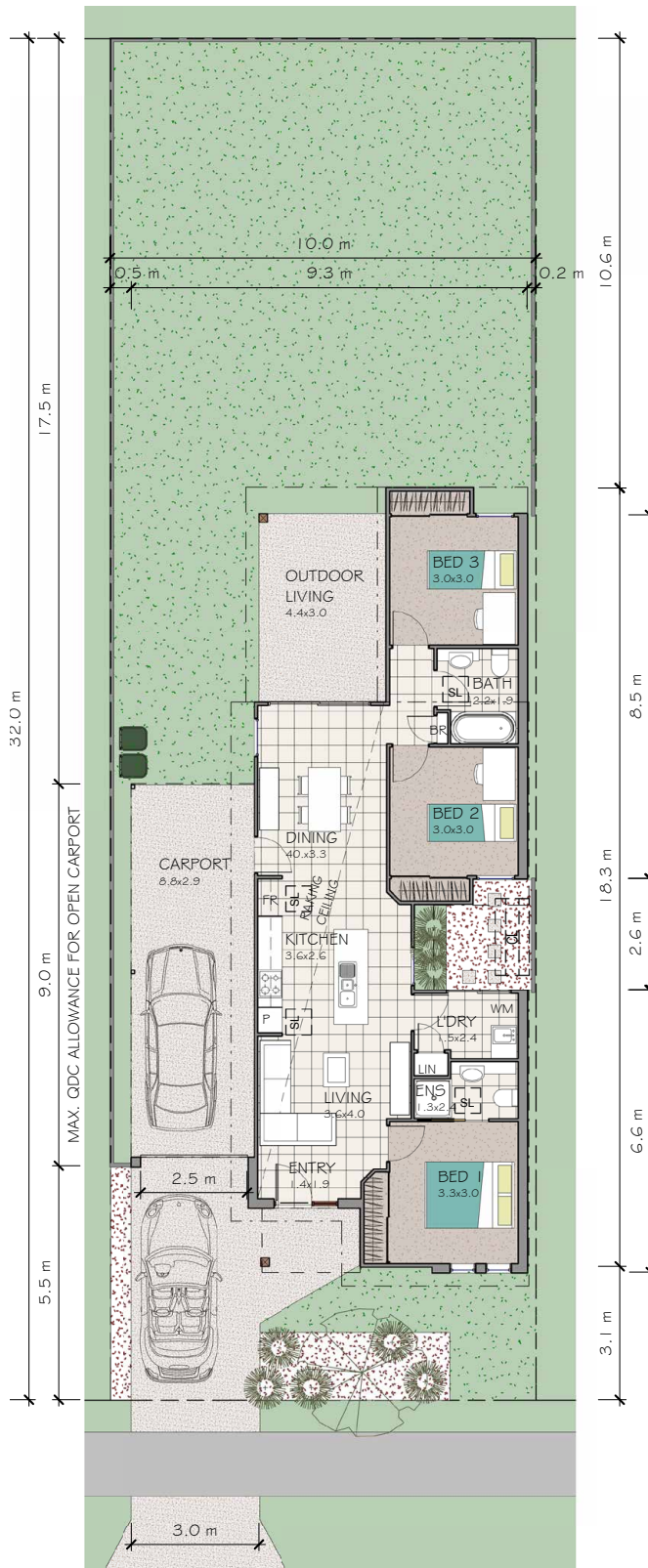
Image for illustrative purposes only.

- 3 Bed 
- 2 Bath 
- 1 Car 
- 1 Jetski 

# THE GREAT OUTDOORS

Smart Living - Smart Space™

An Economic Development Queensland initiative



Please note: floorplan not to scale

Intellectual Property Rights remain with Economic Development Queensland (EDQ)  
All rights reserved. Correct at time of print 09/15.

## Overview

Designed for families who like to entertain at home and still need flexible storage space for jet skis, bicycles, sporting equipment, etc. The home design comes complete with an 8 metre plus, drive-through carport and has additional space for a shed or children's play equipment.

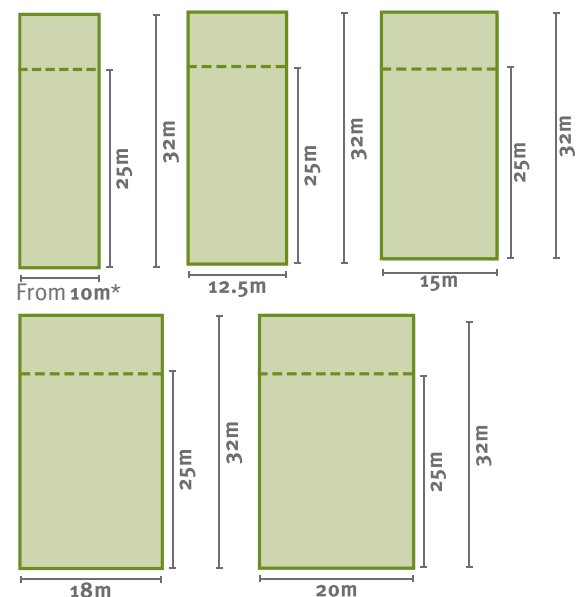
Living:	96.4m <sup>2</sup>	3 Bed		1 Car	
Garage:	27.0m <sup>2</sup>	2 Bath		1 Jetski	
Outdoor living:	13.4m <sup>2</sup>				
Porch:	3.5m <sup>2</sup>				
Total:	140.2m <sup>2</sup>				

## Features:

- GARAGE DOOR OPENING  
3.0m high x 2.5m wide
- UNDER COVER VEHICLE AREA  
8.8m long x 3.0m wide

## Possible land lot sizes:

The Great Outdoors home design has the ability to fit on a variety of lot sizes - refer indicative illustrations below. Please contact an EDQ Sales Professional for current land availability.



\*10 metre wide lots: House designs sited on a lot less than 11m wide will require individual assessment and final approval by the EDQ covenant and design team to determine its compliance and suitability.